

# WIDE RANGE COMPUTERIZED MICROMETER

# USER MANUAL





Item No	Range		Resolution		Accuracy	Micrometer head range	Protection class	Indication	Data output	Calibration
	mm	inch	mm	inch	$\mu\text{m}$	mm			Wireless	ISO 17025
110184008	300-400	12-15"	0,0001	0.00001"	$\pm 5$	25	IP-65	computerized MICS system with 1,54" touchscreen	max 50m	+
110185008	400-500	15-20"			$\pm 5$	25	IP-65		max 50m	+
110186008	500-600	20-24"			$\pm 6$	25	IP-65		max 50m	+
110187008	600-700	24-28"			$\pm 7$	25	IP-65		max 50m	+
110188008	700-800	28-32"			$\pm 8$	25	IP-65		max 50m	+
110189008	800-900	32-36"			$\pm 10$	25	IP-65		max 50m	+
110181108	900-1000	36-40"			$\pm 10$	25	IP-65		max 50m	+
110181208	1000-1200	40-48"			$\pm 14$	50	IP-65		max 50m	+
110181408	1200-1400	48-56"			$\pm 16$	50	IP-65		max 50m	+
110181608	1400-1600	56-64"			$\pm 20$	50	IP-65		max 50m	+
110181808	1600-1800	64-72"			$\pm 24$	50	IP-65		max 50m	+
110182108	1800-2000	72-80"			$\pm 30$	50	IP-65		max 50m	+

Clean the oil from the measuring surfaces of micrometer by cloth.

Turn on micrometer by pressing SWITCH ON button.

Check the setting display to zero. Contact with each other (or with setting gauge) measuring surfaces of the anvil and the spindle, using the ratchet and take a measurement.

Rotation the micrometer screw in the direction of convergence measuring surfaces using the ratchet.

For zero setting, press the ZERO button on Touchscreen.

# MAIN INFO



**MICROTECH**



## PRECISION MEASUREMENTS

MICROTECH computerized micrometer with 0.1 resolution can be used for high precision measurements in manufacturing, automotive medical industry and for calibration



## COLOR GO/NOGO INDICATION

Easy and quick limits control. It's possible setup max and min value throw menu. Color indication reduce possibility of error during control



## INTERNAL MEMORY

Computerized micrometer has memory manager with possibility saving data to folders. Separate Data's or Folders can be transfer Wireless to MICROTECH Software (Windows, Android,iOS)



## FORMULA MODE

In Formula mode we use  $Ax^2+Bx+C$

Main using of this function is:

- Preset function
- Magnification of measured value

For customers request Formula can be updated



## ERROR COMPENSATION

It's possible to make mathematical error compensation. Just re-calibrate micrometer with gauge block set and save results. Micrometer will indicate measuring results include re-calibration.



## TEMPERATURE COMPENSATION

Temperature compensation function gives possibility recalculate details sizes with high or low temperatures to normal (20C conditions). Available recalculation for 7 materials

# TECHNICAL DATA

Parameters	
LED display	color 1,54 inch
Resolution	240x240
Indication system	MICS 3.0
Power supply	Rechargeable Li-Pol battery
Battery capacity	450-800 mAh (depends of device)
Charging port	micro-USB
Case material	Aluminium
Buttons	Switch (Multifunctional), Reset
Wireless data transfer	up to 50m on open area

# CHARGING



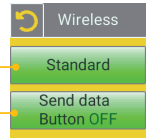
For charging connect USB cable  
Charging process indicating  
on Battery status  
(switch on device)

**BUILT-IN BATTERY** - rechargeable Li-Pol battery



Activate WIRELESS data transfer in WIRELESS menu

Switch on Wireless data transmission  
Activating multifunctional button to save value to memory or send data by touchscreen or button push



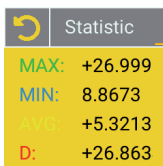
Connect instrument with MICS indication system to Tablet or PC  
Send data to Tablet or PC:

- by Touchscreen
- by Multifunctional button push (activated in Wireless menu)
- by Timer (activated in Timer menu)
- from Internal Memory

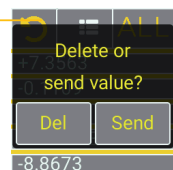
## MEMORY

For save measuring data to internal caliper's memory touch data area on screen or short button push. You can view saved data through menu or send Wireless connection to Windows PC, Android or iOS devices.

**Basic STATISTIC functions:**  
MAX - maximum saved value  
MIN - minimum saved value  
AVG - average value  
D - variance VAR(x)



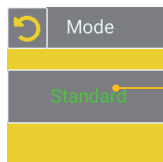
Saved values  
Each value can be Deleted or Send to application



Button ALL select all values  
All values can be Deleted or Send to application

### MEMORY settings

Memory sub-menu



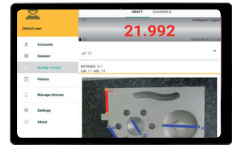
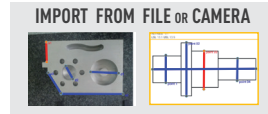
Selecting Standard mode or No saving data to internal memory



**WIRELESS CONNECTION**



**USB-DONGLE**



**Windows**



**iOS**



**ANDROID**

**DOWNLOAD**



**DOWNLOAD**



**DOWNLOAD**



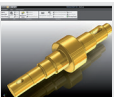
**SAVING DATA TO XLS. CSV FORMATS**



**SAVING DATA TO XLS. CSV FORMATS**



**SAVING DATA TO XLS. CSV FORMATS**



**TRANSFER DATA TO CAD, SPC OR OTHER SOFTWARE**



**SAVING GRAPH**



**SAVING GRAPH**



**TRANSFER DATA TO EXCEL OR OTHER TABLE EDITORS**



**VOICE MODE**



**VOICE MODE**

**DATA TRANSFER DISTANCE FOR INTELLIGENT INSTRUMENTS**

- All MICROTECH Intelligent instruments has internal memory. You can collect data to memory and when it will be necessary transfer all data to the peripheral device with no data losing.
- It's possible transfer data, like in Wireless instruments up to 15 m or up 50 m with external antenna
- USB port can be used to transfer data directly to Windows PC



**QUALITY CONTROL RESULTS**



USE TOUCHSCREEN TO OPERATE MENU

MENU button **MENU** Battery Level

Colour can be changed according function **-0.0000** Actual value

Zero setting **0** Memory

## MEMORY WITH STATISTIC

ALL	Statistic
+7.3563	MAX: +26.999
-0.1109	MIN: 8.8673
+1.2293	Avg: +5.3213
+26.9993	D: +26.863
-8.8673	

## MENU CONFIGURATION



### MAIN MENU



< +000.000

> +000.000

MIN

### LIMITS

color Go/NoGo

Max/Min

Enable

OK

### MAX/MIN

indicating max or min value

Formula

AX+BX+C

OK

### FORMULA MODE

$Ax^2+Bx+C$

Timer

+000 sec.

RESET



0.8970

0.8920

OK

RESET

### ERROR COMPENSATION

mathematical correction

Temp.comp.

Blue, Solid alloys, Mo

+00.00

### TEMPERATURE COMPENSATION

manual correction

Resolution

X.0000

Millimeters

### RESOLUTION

selected up to 0.0001mm

Extra

Axis Mode Normal

CONNECT



Wireless

Standard

Send data

Button OFF

### WIRELESS

modes of data transmission

Mode OFF

UART OFF

Keypad ON

### USB

USB connection configuration

Device

PIN

RESET

### DEVICE SETTING

pin, reset

Display

Angle 180

Sleep



Mode

Standard

### MEMORY SETTING

Link to software



### SOFTWARE

link to download app

Calibration

DAY MONTH YEAR

01 01 2020

CHANGE

### CALIBRATION DATE

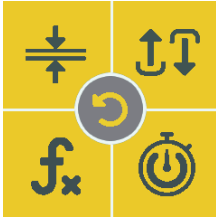
MICROTECH

www.microtech.us

COMP.CALIPER 1

FW: 3.0.5

MAC: 12345



## LIMITS GO/NOGO

### MENU SETTING

→ MAX value  
 → MIN value  
 → zero values

### Colour indication limits

**MAX - NoGo** more MAX value  
**MIN - NoGo** less MIN value  
**RANGE - Go** between MIN & MAX  
**NONE** - disactivating mode

### MAIN SCREEN INDICATION

MENU		
-10.005		+8.0608
0		0 mm
<b>NoGo</b>		<b>Go</b>

## MAX/MIN

### MENU SETTING

### Indication and saving MAX or MIN values

**ENABLE** - activating mode  
**MAX** - indicating MAX measured value  
**MIN** - indicating MIN measured value

### MAIN SCREEN INDICATION

MENU		MENU	
-2.9184		7.2241	
0		0	
<b>MIN</b>		<b>MAX</b>	

## FORMULA

### MENU SETTING

Formula:

$$Ax^2+Bx+C$$

Long push digit to select value

Reset to zero arguments

### FORMULA $Ax^2+Bx+C$

### EXAMPLE OF FORMULA USING

Standard measuring	A=0, B=1, C=0
PRESET 50mm	A=0, B=1, C=50
Value magnification x3	A=0, B=3, C=0
Square value	A=1, B=0, C=0

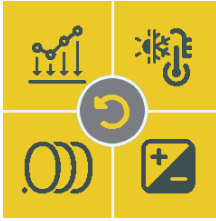
## TIMER

### MENU SETTING

### Saving data to memory or sending Wireless by Timer

Select timer period

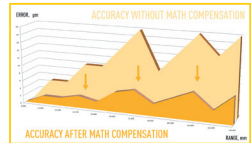
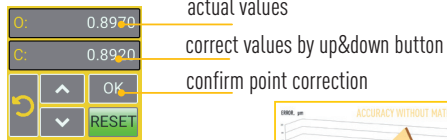
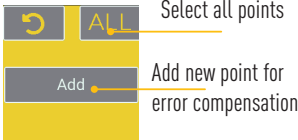
Reset to deactivate mode



## MATHEMATICAL ERROR COMPENSATION

### MENU SETTING

Mathematical correction points with big error to normal values



use gauge blocks or measuring machine for points correction

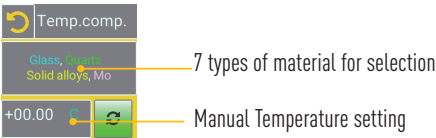


## TEMPERATURE COMPENSATION

### MENU SETTING

Re-calculation detail size to calibration conditions (20°C)

- 7 types of material:
- glass, quartz, solid alloys
  - granite, graphite
  - Fe, Ni, Fe alloys
  - stainless steel
  - cooper, Cu alloys
  - aluminium, al alloys
  - acrylic sheet



## RESOLUTION

### MENU SETTING



### MAIN SCREEN INDICATION

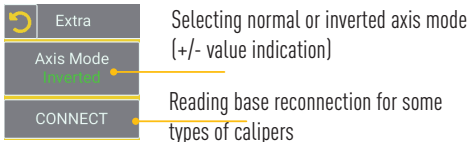
**+8.0608**

Selecting resolution of value on main screen and memory



## EXTRA (Axis mode)

### MENU SETTING







## WIRELESS CONNECTION

**MENU SETTING**      Activating or deactivating wireless data transfer

Wireless

Standard

Send data Button OFF

Switch on Wireless data transmission

Activating multifunctional button to save value to memory or send data by touchscreen or button push

## USB CONNECTION

**MENU SETTING**      USB connection mode under construction

Mode OFF

UART OFF

Keypad ON

CONFIG

Configure

Trail symbol ON+J

Divider Dot

## PIN & RESET

**MENU SETTING**      Activating PIN to device setting      RESET to factory settings

Device

PIN      RESET

1	2	3	4
5	6	7	8
9	0	<	✓

Device

Confirm reset?

Yes      No

## DISPLAY SETTING

**MENU SETTING**      DISPLAY ROTATION, BRIGHTNESS, SLEEPING MODE

Display

Angle 180

Sleep ON

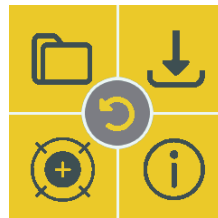
Brightness level

Display rotation 0°, 90°, 180°, 270°

- Sleep OFF (15 s low brightness off, sleep off)
- Sleep 15s (15 s low brightness on, sleep off)
- Sleep ON (15 s low brightness on, sleep on)

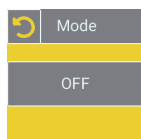
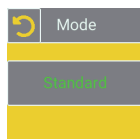
+8.0608      0 mm      mm      0

8090 8+



## MEMORY SETTINGS

**MENU SETTING**      Activating or disactivating saving values to memory



**Standard** - saving values to memory  
**OFF** - disable saving to memory

↻	☰	ALL
+7.3563		
-0.1109		
+1.2293		
+26.9993		
-8.8673		

## LINK TO SOFTWARE

**MENU SETTING**

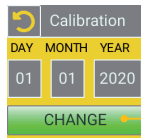


QR Link to MICROTECH web site page with MDS Software download  
- Android, iOS, Windows versions  
- Free and Pro versions  
- Manuals



## CALIBRATION DATE

**MENU SETTING**      Calibration date info



Push for change date info

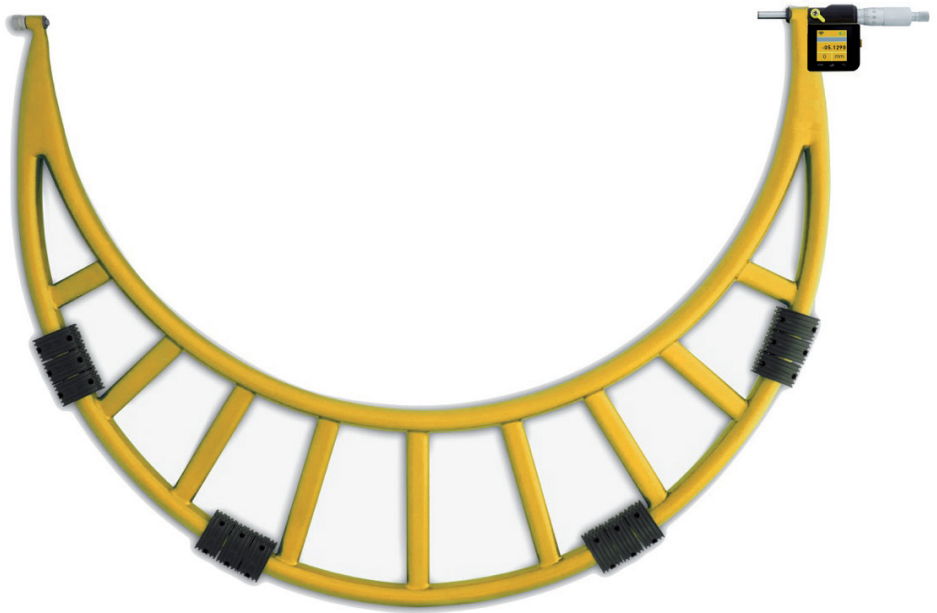
DAY	↻
01	
MONTH	
01	
YEAR	
2021	

## DEVICE INFO

**MENU SETTING**



Information about device  
- device name  
- firmware version  
- MAC adress for easy connection





**MICROTECH**

**MICROTECH**

innovative measuring instruments

61001, Kharkiv, Ukraine, str. Rustaveli, 39

tel.: +38 (057) 739-03-50

[www.microtech.ua](http://www.microtech.ua)

[tool@microtech.ua](mailto:tool@microtech.ua)

Change without prior notice