



SUB-MICRON INTELLIGENT COMPUTERIZED INDICATOR

USER MANUAL





Item No	Range		Resol.	Accu- racy	Hyste- resis	Force	Preset	Go/NoGo	Max/Min	Formula	Timer	Temp comp	Linear corr	Calibr date	Connect. status	Recharge batt	Memory	Wireless	USB	Color Display					
	mm	inch																			mm	µm	µm	N	Functions
120129133	0-13	0-0,5"	0,0001 /	±5	0,5	0,6-1	•	•	•	•	•	•	•	•	•	•	•	•	•	•	•				
120129135				±3			•	•	•	•	•	•	•	•	•	•	•	•	•	•	•	•	•	•	
120129137				±2			•	•	•	•	•	•	•	•	•	•	•	•	•	•	•	•	•	•	•
120129138				±1.6			•	•	•	•	•	•	•	•	•	•	•	•	•	•	•	•	•	•	•
120129252	0-25,4	0-1"	0,001 /	±7	0,5	0,7-1,2	•	•	•	•	•	•	•	•	•	•	•	•	•	•	•				
120129253				±5			•	•	•	•	•	•	•	•	•	•	•	•	•	•	•	•	•	•	
120129257				±3			•	•	•	•	•	•	•	•	•	•	•	•	•	•	•	•	•	•	•
120129258				±2			•	•	•	•	•	•	•	•	•	•	•	•	•	•	•	•	•	•	•
120129503	0-50,8	0-2"	0,01 /	±10	0,5	1,2-2,2	•	•	•	•	•	•	•	•	•	•	•	•	•	•	•				
120129507				±4			•	•	•	•	•	•	•	•	•	•	•	•	•	•	•	•	•	•	
120129508	0-100	0-4"	0,01 /	±3	0,5	3,2-5,2	•	•	•	•	•	•	•	•	•	•	•	•	•	•	•				
120129903				±15			•	•	•	•	•	•	•	•	•	•	•	•	•	•	•	•	•	•	
120129907				±5			•	•	•	•	•	•	•	•	•	•	•	•	•	•	•	•	•	•	•

Parameters	
LED display	color 1,54 inch
Resolution	240x240
Indication system	MICS 4.0
Power supply	Rechargeable Li-Pol battery
Battery capacity	450 mAh
Charging port	micro-USB / Magnetic port
Case material	Aluminium
Buttons	Switch (Multifunctional), Reset
Wireless data transfer	Ultra long range
USB data transfer	USB HID

TECHNICAL DATA

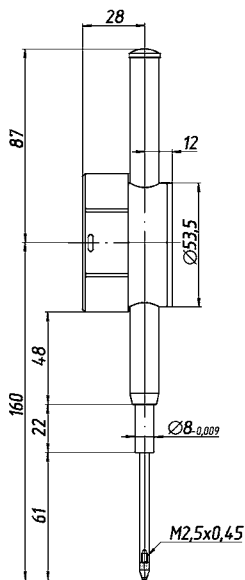
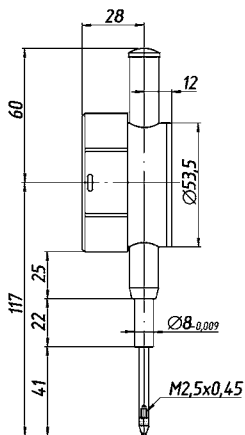
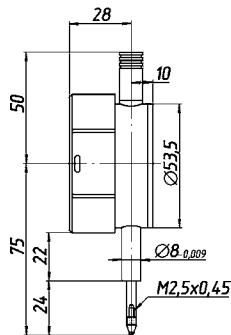
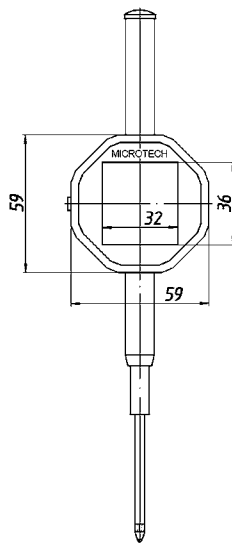
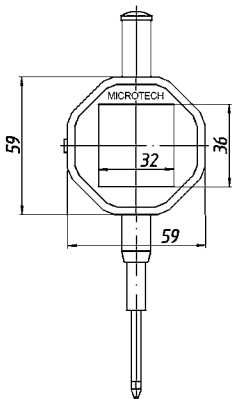
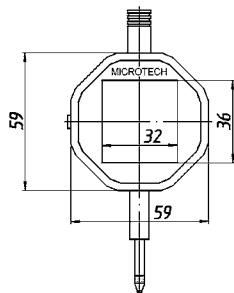
MAIN INFO

- SWITCH ON DEVICE** - button push (1 sec)
- SWITCH OFF DEVICE** - button push (2 sec)/ auto switch off
- DATA TRANSFER** - programming throw menu



BUILT-IN BATTERY - rechargeable Li-Pol battery

For charging connect USB cable





3 MODES OF DATA TRANSFER (USB + 2 WIRELESS MODES)



WIRELESS CONNECTION TO MDS APP



WIRELESS data transfer to MICROTECH MDS app for Windows, Android, iOS



WIRELESS HID CONNECTION



WIRELESS HID data transfer (like keyboard) direct to any customers app and system

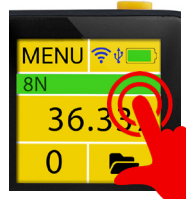


USB HID CONNECTION

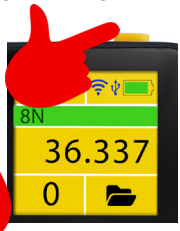


USB HID data transfer (like keyboard) direct to any customers app and system

7 WAYS HOW TO TRANSFER DATA TO PC OR TABLET



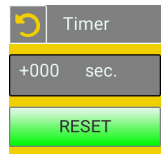
TOUCHSCREEN TAP



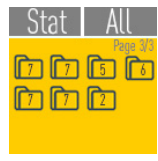
BUTTON PUSH



SELECTED FORCE



BY TIMER



FROM MEMORY



IN MDS APP



FROM PAIRED DEVICE

DOWNLOAD MDS APP FOR MICROTECH DEVICES
WIRELESS CONNECTION FROM www.microtech.ua,
GooglePlay & App Store

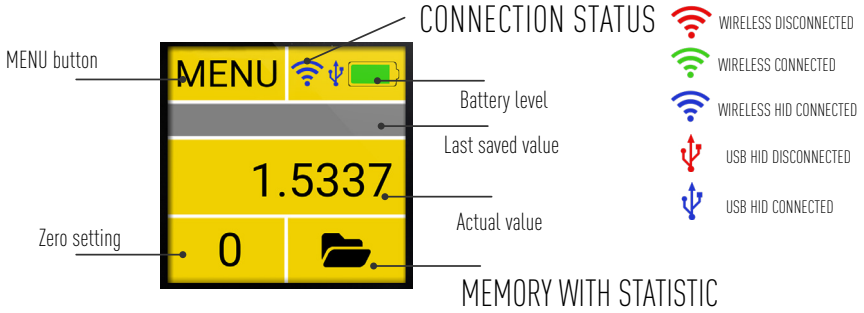


DOWNLOAD APP

MAIN SCREEN



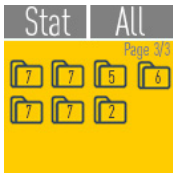
MICROTECH



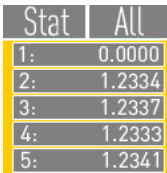
MEMORY

For save measuring data to internal device memory touch data area on screen or button push. You can view saved data throw menu or send Wireless or USB connection to Windows PC, Android or iOS devices.

It's possible to use Standard or Folders system with 2000 values in memory.



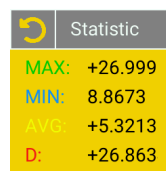
FOLDERS SYSTEM



MEMORY 2000 VAL.



MEMORY EXPORT



STATISTIC

Basic STATISTIC functions:
 MAX - maximum saved value
 MIN - minimum saved value
 AVG - average value
 D - difference between MAX & MIN

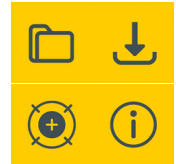
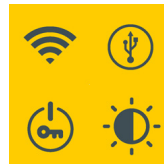
STANDARD or FOLDER system can be activated throw MEMORY menu

MENU STRUCTURE

MENU CONFIGURATION



USE TOUCHSCREEN TO OPERATE MENU
 SWIPE TO MOVE INSIDE



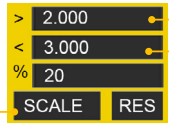


LIMITS mode GO/NOGO



MAX - NoGo more Upper limit
 MIN - NoGo less Lower limit
 RANGE - Go between Limits

COLOR INDICATION LIMITS ON MAIN SCREEN Go NoGo



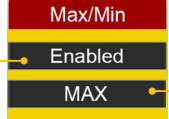
Upper limit
 Lower limit

PEAK mode MAX/MIN



DISABLE - non active mode
 ENABLE - activating mode
 REFRESH - refresh peak value according timer

INDICATION AND SAVING MAX OR MIN VALUES



MAX - indicating MAX measured value
 MIN - indicating MIN measured value

TIMER mode

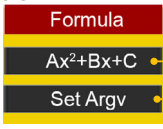


SAVING DATA TO MEMORY OR SENDING WIRELESS/USB BY TIMER



Select timer period
 Reset to deactivate mode

FORMULA mode



Select FORMULA Type (Math, Radius or other)
 Select arguments

RESOLUTION selection



Resolution selecting
 mm/inch conversion

DISPLAY settings



Sleep OFF (15 s low brightness off, sleep off)
 Sleep 15s (15 s low brightness on, sleep off)
 Sleep ON (15 s low brightness on, sleep on)



Display rotation 0°, 90°, 180°, 270°
 Brightness level

LINEAR error compensation



Re-calculation detail size to calibration conditions (20°C)

Linear correction error's on device actual values



correct values by up&down button confirm point correction

TEMP compensation



Manual Temperature setting



4 types of material for selection:
 - Glass, Quartz
 - Stainless steel
 - Cuprum and alloys
 - Alluminium and alloys

FUNCTIONS



MICROTECH

WIRELESS data transfer

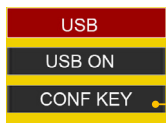


Reconnection button
Wireless power regulation



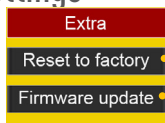
ON - WIRELESS data transfer to MDS App for Android, iOS, Windows
HID- WIRELESS HID direct transfer data to any App in Windows, MacOS, Linux, Android devices (like keyboard). Configure data format in USB sub-menu
2D-S - Slave device on WIRELESS connection on HUB mode

USB OTG data transfer



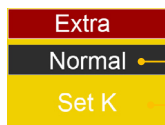
Connect USB cable to PC & Activate USB HID connection mode
Select setting of data transfer
Direct transfer data to any App in Windows, MacOS, Linux, Android devices
Configuring data transfer Dot/Comma and Tab/Arrow Down/CR+LF

RESET to Factory settings



Push 10 times to RESET device to factory settings
Push 10 times to FIRMWARE UPDATE

EXTRA



Selecting normal or inverted axis mode (+/- value indication)
Coefficient setting (for distributor and calibration only)

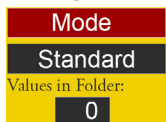
LINK to app's



QR Link to MICROTECH web site page with MDS Software download
- Android, iOS, Windows versions
- Free and Pro versions
- Manuals

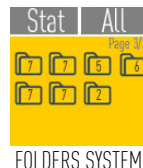


MEMORY manager setting



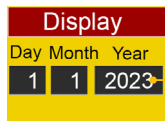
Activating STANDARD or FOLDER SYSTEM

Values in each Folder



FOLDERS SYSTEM

CALIBRATION date info



Push for change calibration date info

Device INFO

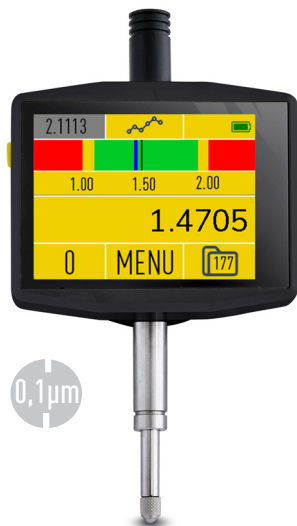


Information about device
- Firmware version
- MAC adress for WIRELESS connection

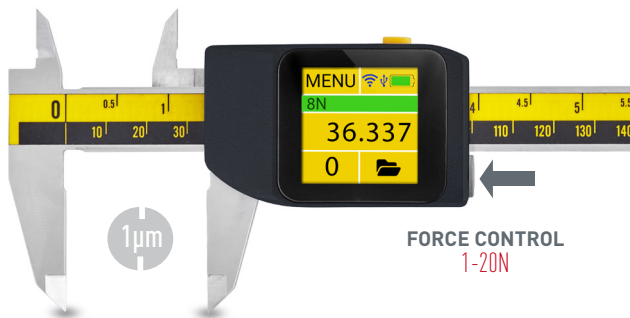


MICROTECH

INDUSTRY 4.0 INSTRUMENTS



0,1µm



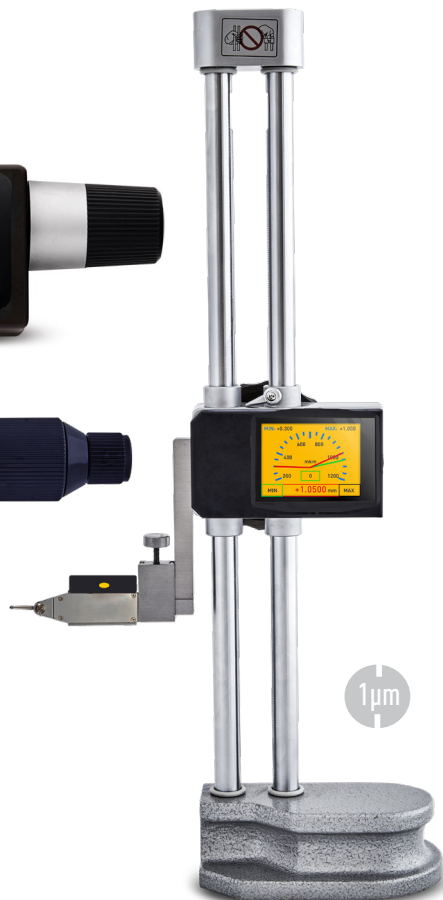
FORCE CONTROL
1-20N



0,1µm



0,1µm



1µm

MICROTECH

innovative measuring instruments

61001, Kharkiv, Ukraine, str. Rustaveli, 39

tel.: +38 (057) 739-03-50

www.microtech.ua

tool@microtech.ua

Change without prior notice